

Fall-Protection

Guard Rail, Ladder Platform & Manbridges

Steel Guard Rail & Ladder Platform:

Efficiency Production **Steel Guard Rail** is an easy, OSHA compliant fall protection device. **Steel Guard Rail** come in 6' and 10' lengths, with adjustable shoes to fit 3" to 8" trench shield sidewalls.

The external 2' x 4' **Ladder Platform** includes a gate that pins open or closed, and a perpendicular ladder support bar for easy quick-access into any shielded pit or trench. The platform can be used with guard rail or independently.



Build-A-Box Ladder Platform Bracket & Adapter for Steel Guard Rail:

With the use of an adapter plate, Efficiency Production's **Steel Guard Rail** also fits on the Build-A-Box modular aluminum trench shielding system.

Additionally, Build-A-Box features a custom **Ladder Platform Bracket** accessory (three or four-sided shields).



Guard Rail on Slide Rail Panel



Guard Rail on Trench Shield

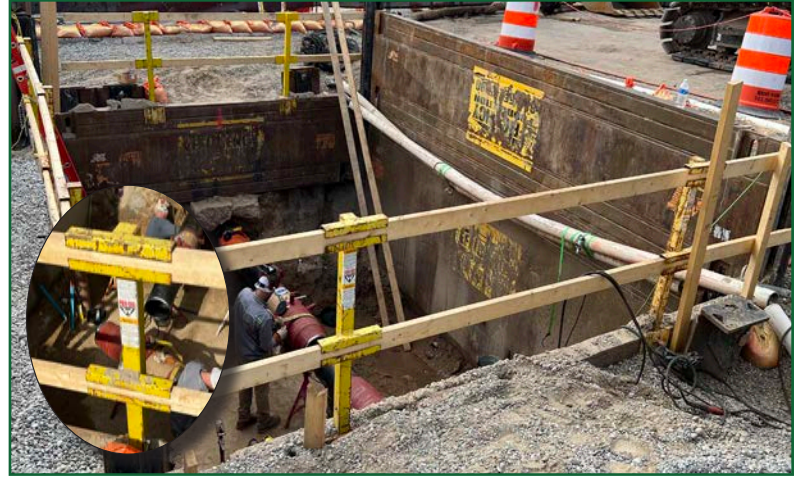
Fall-Protection

Fencing, Guard Rail, & Manbridges

Rail Post

With its unique two-piece design, Efficiency Production's **Rail Post** system is designed and tested to meet OSHA hand rail standards. Advantages include:

- Fully adjustable to fit up to 8" trench shield sidewalls, Slide Rail panels, or sheeting
- Easier and faster to install and remove compared to many traditional fall protection systems
- Includes engineer-stamped data sheet



Trench Access Bridges

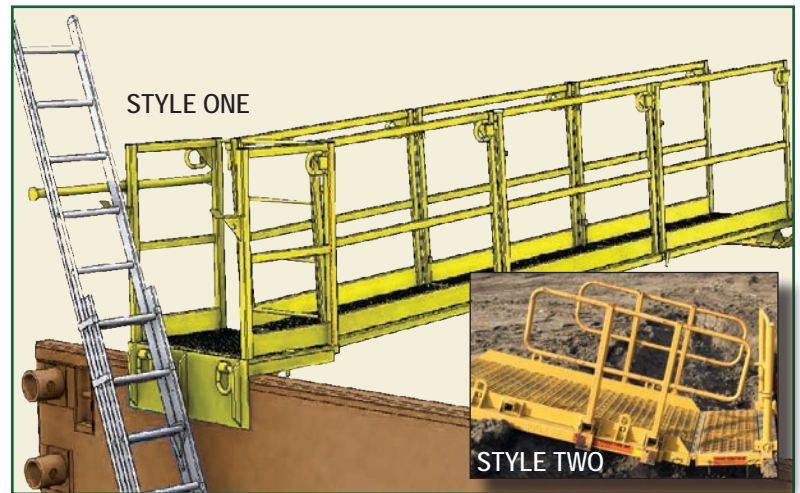
Available in two styles, **Trench Access Bridges** are designed for simple, quick and safe access across to trench shields or Slide Rail Systems.

STYLE ONE:

- Fully adjustable to fit 4", 6" and 8" wall units
- Extends access in 5' increments
- Skid plate or wheel assembly for easy dragging

STYLE TWO:

- Manbridge available in 8', 12', 16', or 20' lengths
- Used with Ladder Platform or independently
- Fully adjustable to fit 3' to 8" steel or aluminum sidewalls, or Slide Rail panels



Aluminum Manbridge

Lightweight 8' and 12' long **Aluminum Manbridge** with 9" sidewall brackets work on steel and aluminum sidewalls, and Slide Rail panels.

- Includes integrated aluminum 4' hand rails
- 190 lbs. can be carried by hand
- Load limit: 1,200 lbs.

