

# EFFICIENCY PRODUCTION

AMERICA'S TRENCH BOX BUILDER™

## Hydraulic Shoring Plastic Pump Can



EFFICIENCY PRODUCTION  
Plastic Pump Can REPAIR KIT

## Instructions for Repair Kit

#AS512025; Revised August 24, 2023



America's Trench Box Builder™



### DISASSEMBLY

1. Empty Tank.
2. Remove bolts **#3** and **#13** and pump spacer **#6** (see illustration DTCPUMP-COMPLETE) and remove pump from container.
3. Remove shoulder bolt **#8** from plunger rod and handle and rotate handle away from plunger rod.
4. Slide plunger rod **#22** out of pump head body **#26** (see illustration DTCPUMP-SUB) and set plunger rod aside for reassembly.
5. Remove snap ring **#23**, wear ring **#24**, and polyseal **#25** from top of pump head body **#26** (see illustration "DTCPUMP-SUB")
6. Remove check housing screen **#34** and screen clamp **#35** (See illustration DTCPUMP-SUB) if so equipped.
7. Using a pin type spanner wrench or similar tool, remove bottom check housing assembly from pressure tube **#28** and discard o-ring **#31**.
8. Using a strap wrench or similar tool, remove pressure tube **#28** from pump head body.
9. Remove o-ring **#27**, snap ring **#23**, and wear ring **#24** from underside of pump head body.
10. Thoroughly clean plunger rod, pump head body, pressure tube, check housing, and snap rings for reassembly.
11. Inspect all parts for wear or damage. Order replacement parts as needed.

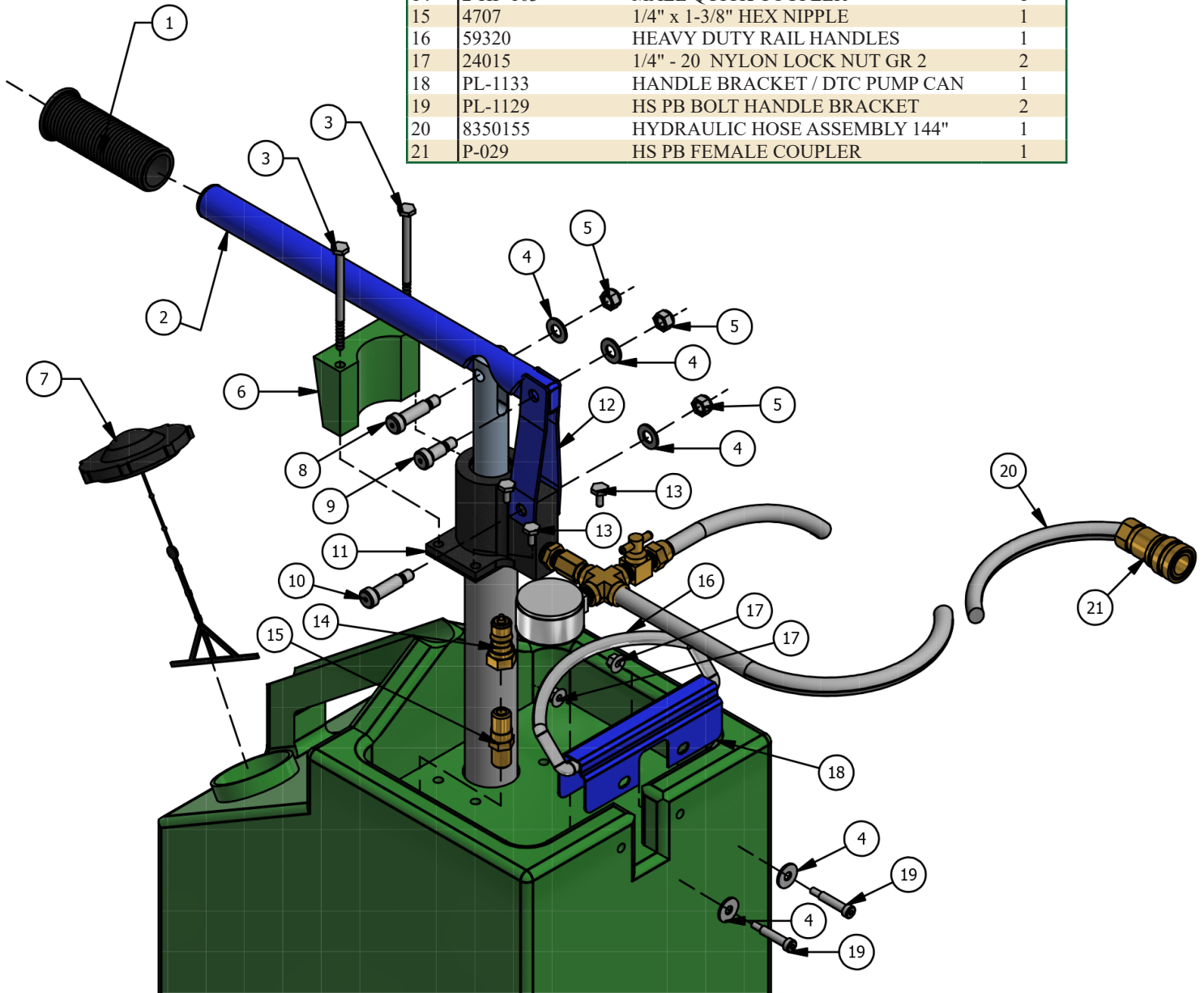
### REASSEMBLY

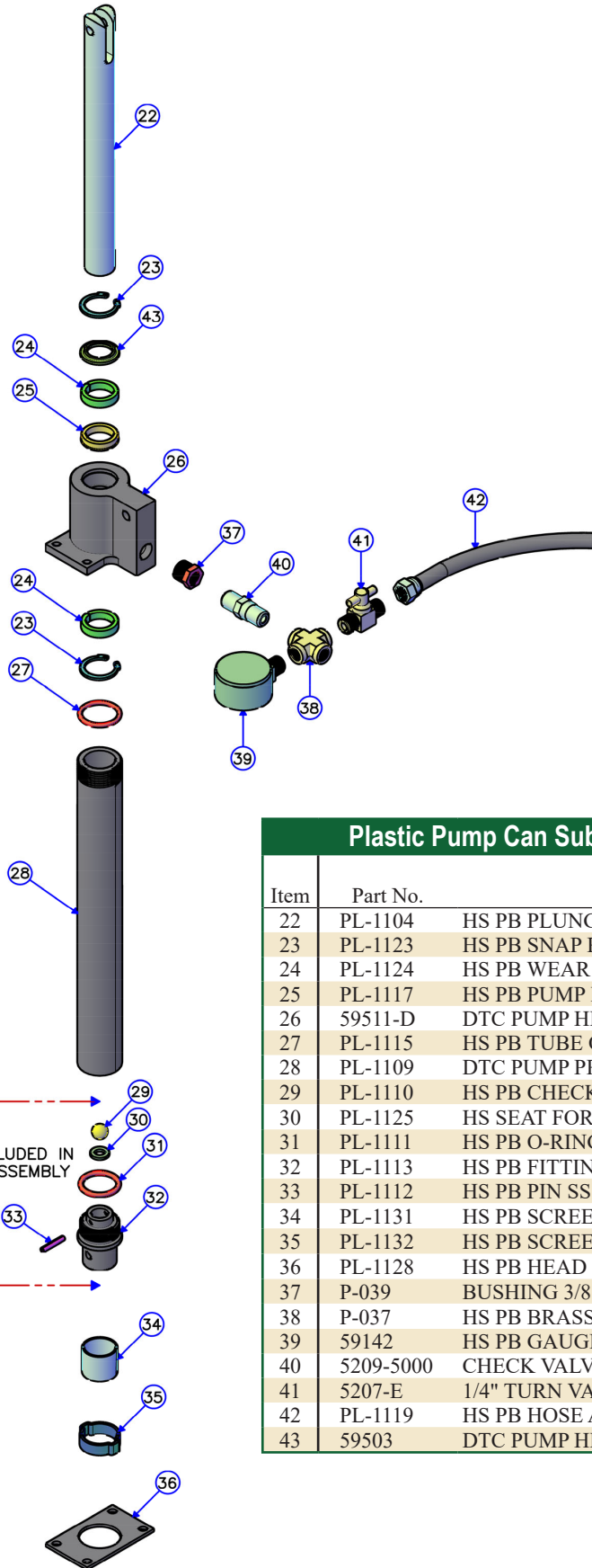
1. Install new o-ring **#31** onto check housing assembly. Note: this o-ring is slightly smaller in diameter and slightly thicker than o-ring **#27**.
2. Install check housing assembly into pressure tube **#28** and tighten with pin type spanner wrench or similar tool.
3. Install check housing screen **#34** onto bottom check housing and secure with clamp **#35**.
4. Install new wear ring **#24**, reinstall snap ring **#23**, and install new o-ring **#27** into bottom of pump head body.
5. Install pressure tube **#28** into pump head **#26** and tighten using strap wrench or similar tool.
6. Install new polyseal **#25** (seal lip goes down), new wear ring **#24**, and new pump head wiper seal **#43**. Reinstall snap ring **#23**.
7. Lightly lubricate plunger rod **#22** before inserting back into pump head body **#26**.
8. Reattach handle to plunger rod with shoulder bolt, washer, and nut removed in *Step 3* of disassembly.
9. Reinstall pump assembly into container and reinstall bolts **#3**, bolts **#13**, and spacer **#6**. Tighten bolts to secure pump to container but do not over tighten.
10. Partially fill container with appropriate shoring fluid and prime pump with outlet open.
11. Close pump outlet and test pump for proper operation.





5 Gallon Plastic Pump Can Parts			
Item	Part No.	Description	Qty Req
	59529-EPI-WHITE	DTC CONTAINER w/ EPI LOGO	1
1	PL-1116	HS PB HANDLE GRIP RUBBER	1
2	PL-1102	HS PB HANDLE	1
3	25016B	1/4" - 20 x 3" STAINLESS STEEL	2
4	26010	1/4" FLAT WASHER GR 8 USS	5
5	24041	5/16" - 18 NYLON LOCK NUT	3
6	PL-1127	HS PB SPACER FOR DTC PUMP	1
7	PL-1121	HS PB FILL CAP FOR TANK	1
8	25026A	3/8" x 1" SHOULDER BOLT	1
9	25026B	3/8" x 3/4" SHOULDER BOLT	1
10	25026C	3/8" x 1-1/4" SHOULDER BOLT	1
11	DTCPUMP-SUB	DTC PUMP SUBASSEMBLY	1
12	PL-1105	HS PB TIE ROD LINKS (2/SET)	1
13	PL-1118	1/4" - 20 x 3/4" HEX CAP SCREW	2
14	2-HF-103	MALE QUICK COUPLER	1
15	4707	1/4" x 1-3/8" HEX NIPPLE	1
16	59320	HEAVY DUTY RAIL HANDLES	1
17	24015	1/4" - 20 NYLON LOCK NUT GR 2	2
18	PL-1133	HANDLE BRACKET / DTC PUMP CAN	1
19	PL-1129	HS PB BOLT HANDLE BRACKET	2
20	8350155	HYDRAULIC HOSE ASSEMBLY 144"	1
21	P-029	HS PB FEMALE COUPLER	1





ITEMS 29 THRU. 33 INCLUDED IN  
CHECK HOUSING SUB-ASSEMBLY  
PART# 8345188

### Plastic Pump Repair Kit

Part No.: AS512025	
Includes:	
PL-1124	HS PB WEAR RING FOR PLUNGR ROD
PL-1117	HS PB PUMP HEAD POLYSEAL
PL-1111	HS PB O-RING BTM CHECK HOUSE
PL-1123	HS PB SNAP RING FOR PUMP BODY
59503	DTC PUMP HEAD WIPER SEAL
P-039	3/8" x 1/4" REDUCER - BRASS
PL-1131	HS PB SCREEN STRAINER
PL-1132	HS PB SCREEN RETAINER
PL-1115	HS PB TUBE O-RING PRESSURE

### Plastic Pump Can Sub-Assembly (DTC PUMP-SUB)

Item	Part No.	Description	Qty Req
22	PL-1104	HS PB PLUNGER ROD	1
23	PL-1123	HS PB SNAP RING FOR PUMP BODY	2
24	PL-1124	HS PB WEAR RING FOR PLUNGR ROD	2
25	PL-1117	HS PB PUMP HEAD POLYSEAL	1
26	59511-D	DTC PUMP HEAD (BODY-ANODIZED)	1
27	PL-1115	HS PB TUBE O-RING PRESSURE	1
28	PL-1109	DTC PUMP PRESSURE TUBE (ANODIZ)	1
29	PL-1110	HS PB CHECK BALL	1
30	PL-1125	HS SEAT FOR BTM CHECK NYLON	1
31	PL-1111	HS PB O-RING BTM CHECK HOUSE	1
32	PL-1113	HS PB FITTING BTM CHECK HOUSE	1
33	PL-1112	HS PB PIN SS ROLL	1
34	PL-1131	HS PB SCREEN STRAINER	1
35	PL-1132	HS PB SCREEN RETAINER	1
36	PL-1128	HS PB HEAD GASKET	1
37	P-039	BUSHING 3/8" M 1/4" FW	1
38	P-037	HS PB BRASS FE CROSS 1/4" FPTW	1
39	59142	HS PB GAUGE LIQUID FILLED	1
40	5209-5000	CHECK VALVE 1/4" BRASS 5,000 p	1
41	5207-E	1/4" TURN VALVE BRASS	1
42	PL-1119	HS PB HOSE ASSEM RETURN DRAIN	1
43	59503	DTC PUMP HEAD WIPER SEAL	1